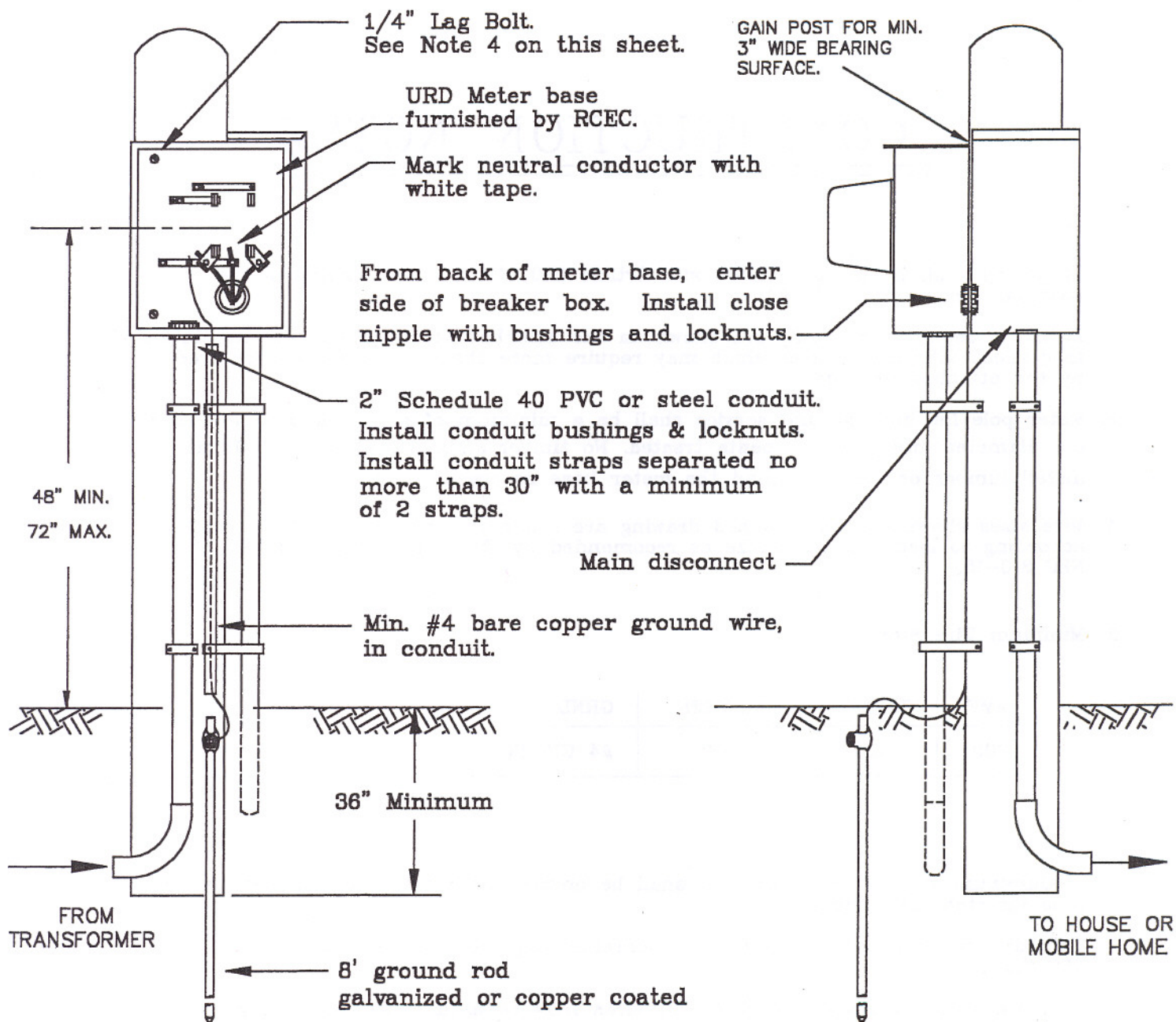


RUSK COUNTY ELECTRIC COOPERATIVE, INC.

METER POLE FOR UNDERGROUND SERVICE



Notes:

1. RCEC will enter meter base on left side.
2. Member will install riser conduit, conduit straps and long sweep radius elbow.
3. Main disconnect location must meet clearance requirements as specified by NEC 110-16.
4. To mount meter base on pole, member will attach with 1/4" lag bolts.

RUSK COUNTY ELECTRIC COOPERATIVE, INC.

CONSTRUCTION NOTES

1. All wiring shall be in accordance with Article 230 of the latest edition of the National Electric Code. (NEC)
2. Minimum requirements only are shown on the attached standard and are not intended to conflict with local codes which may require more than the minimum required by the attached drawing.
3. Meter pole for underground service shall be a minimum of 8' long and 6" minimum top diameter; creosoted or penta treated. No timber structure accepted. Do not install lumber or boards behind the meter base or breaker box.
4. Wire sizes shown on the attached drawing are minimum only and shall be sized according to load and main size as recommended by the latest edition of the NEC 310-15.
5. Minimum Wire Size:

AMP	Cu THWN	AL THWN	GRND
200	3/0	250	#4 CU (SOLID)

6. If aluminum wire is used, the wire shall be covered with an oxide inhibitor before it is inserted into terminal.
7. Main disconnect locations must meet clearance requirements as specified by NEC 110-16.
8. No more than six circuit breaker enclosures may be used without installing a main breaker.
9. All conduits shall have locknuts and bushings installed, and no open holes are allowed in meter base.
10. Ground rods must be 5/8" X 8' and shall be galvanized or copper coated with an approved ground wire clamp.